

Photometric Report

ERA 700 IP – Narrow

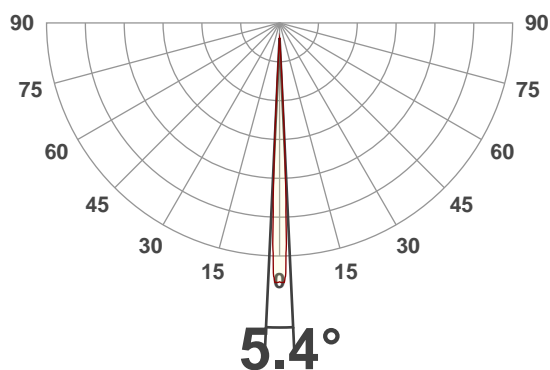
MARTIN PROFESSIONAL R&D OPTICAL LABORATORY

GENERAL SPECIFICATIONS

Total Fixture Output:	26000 lm
Light Engine Output:	46000 lm
Efficacy:	28 Lumen/Watt
Lens Option:	N/A
Zoomrange:	5.4-44 °
CRI:	70
CQS:	68
TM-30 Rf:	71
TM-30 Rg:	94
TLCI:	46
Color Temperature:	6500 k



MEASUREMENT

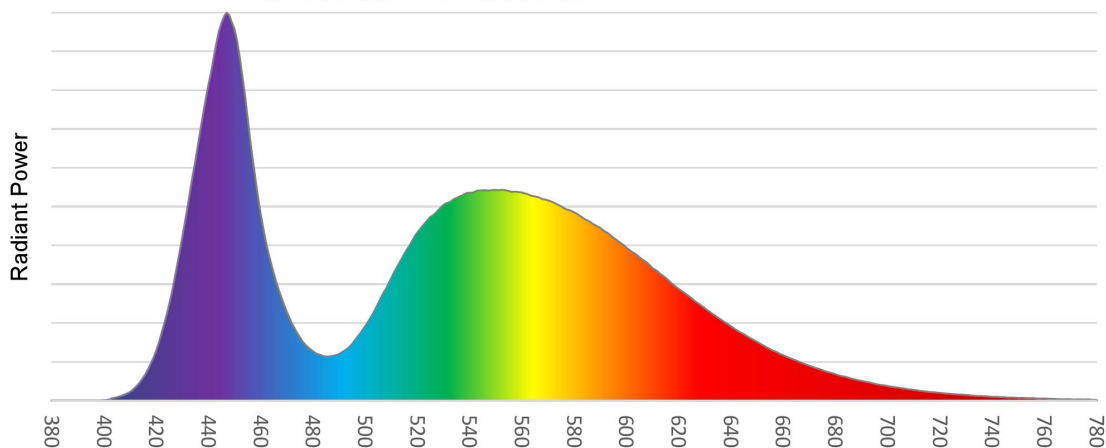


Catalog Number:	15600768015
Measured Output:	10262 lm
Measured Peak:	1393059 cd
Consumed Power:	874 W
Efficacy:	11.7 lm/Watt

Beam Angle (50%):	5.4 °
Field Angle (10%):	7.1 °
Cutoff Angle (3%):	7.9 °

Measurement Condition:	
Ambient Temperature:	25 ° +/- 5 ° C
AC Supply:	230V/50Hz
Fan Mode:	Regulated
Fixture Warm-up Time:	30 minutes

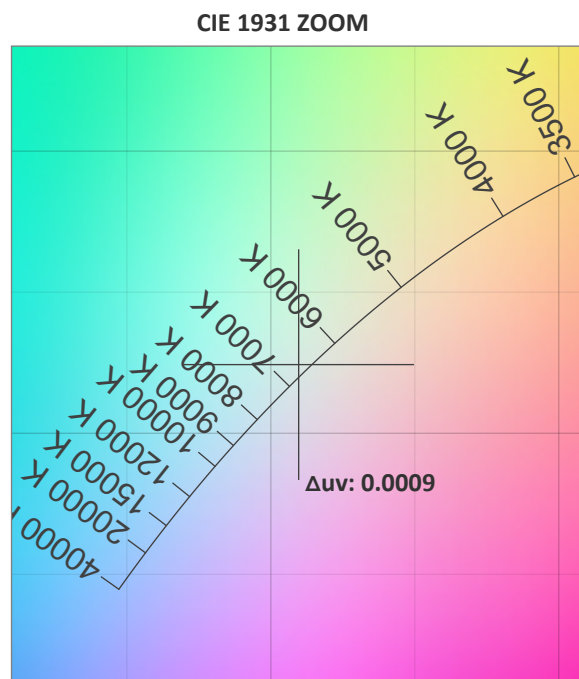
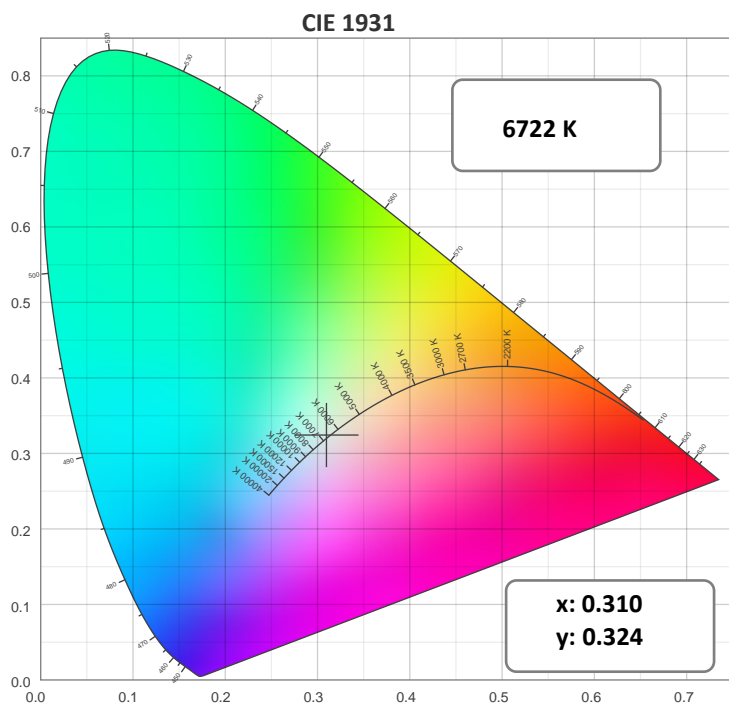
SPECTRAL DISTRIBUTION



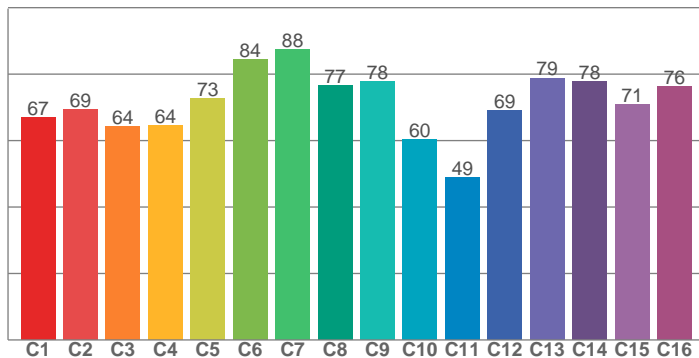
Photometric Report

ERA 700 IP – Narrow

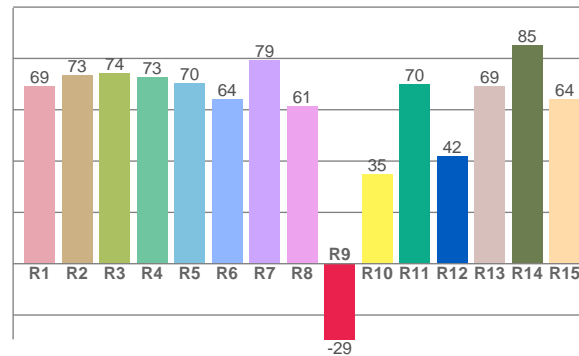
CHROMATICITY



TM30: 71.1



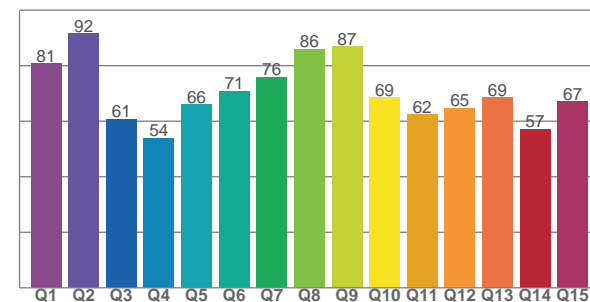
CRI: 70.6 (R1-R8)



COLOR PARAMETERS

Color Temperature	Color Rendering Index	Red Component	Color Fidelity	Color Gamut
CCT	CRI	CRI R9	TM30 Rf	TM30 Rg
6722 K	70.6	-29.5	71.1	93.5

CQS: 68.8



Television Lighting Consistency Index	Color Quality Scale	Color Coordinate CIE 1931	Color Coordinate CIE 1931	Color Coordinate CIE 1964	Color Coordinate CIE 1964	Color Deviation from Black Body
TLCI	CQS	x	y	u	v	Δuv
46	68.8	0.310	0.324	0.197	0.310	0.0009

Photometric Report

ERA 700 IP – Narrow

TM30

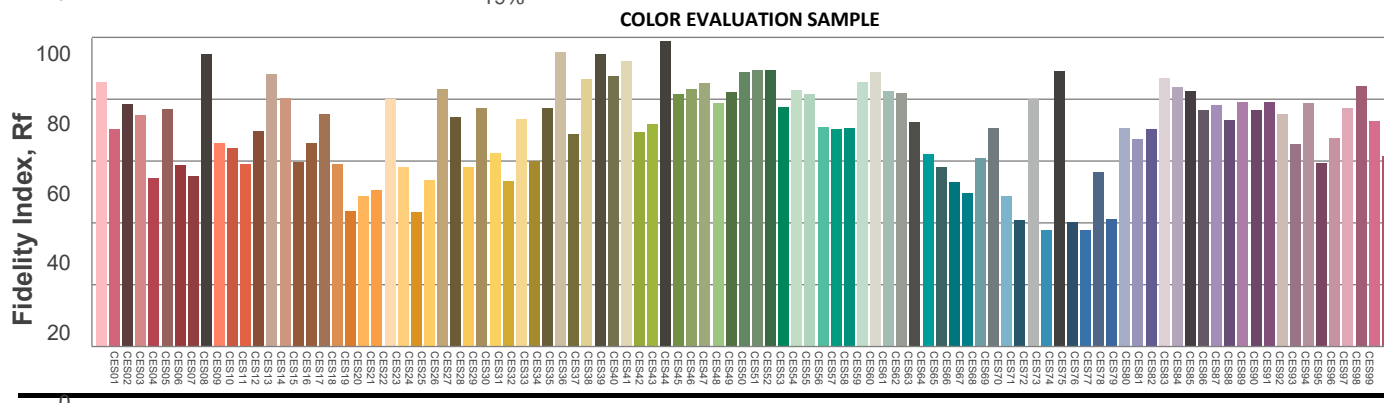
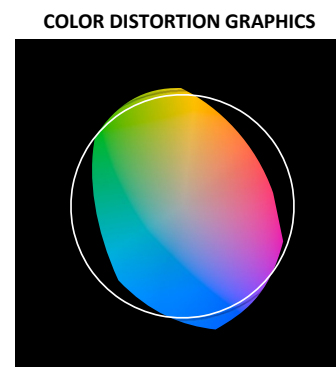
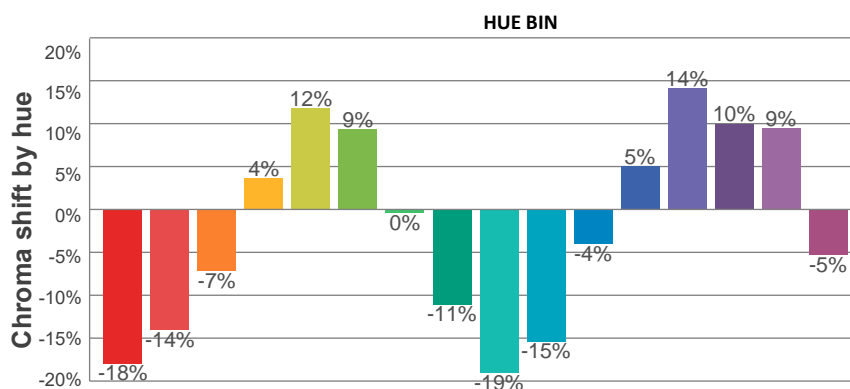
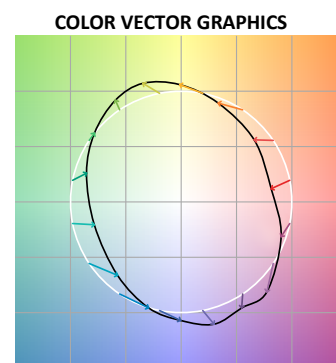
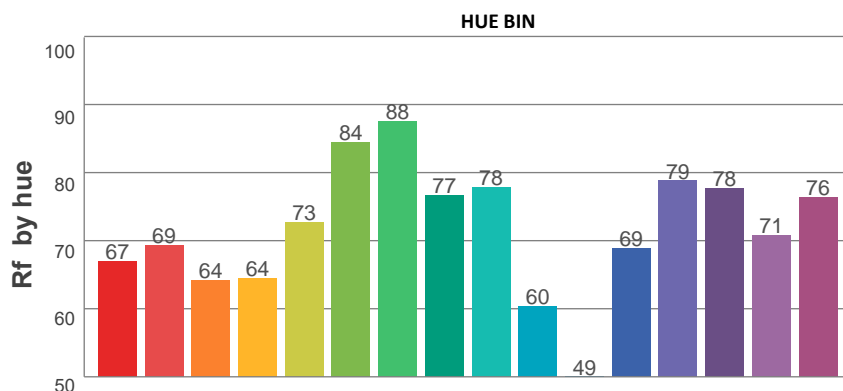
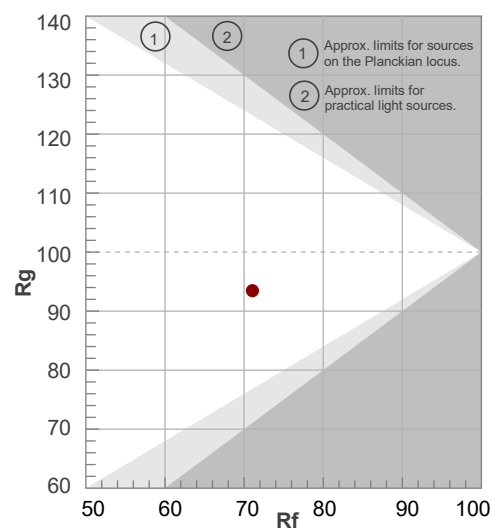
Rf 71.1

Fidelity index Rf

Rg 93.5

Gamut index Rg

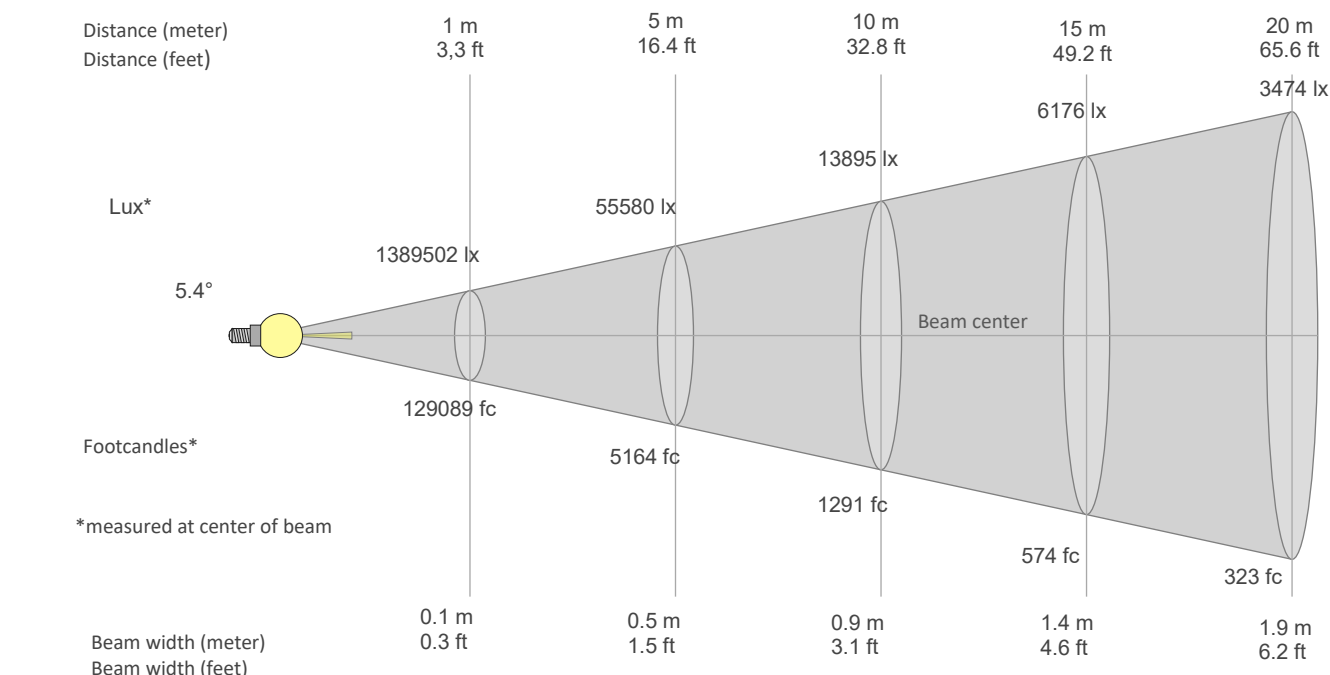
Hue Bin	R _f	Graphic shifts (%)	
		Chroma	Hue
1	67	-18%	-4%
2	69	-14%	10%
3	64	-7%	22%
4	64	4%	22%
5	73	12%	13%
6	84	9%	-2%
7	88	0%	-8%
8	77	-11%	-9%
9	78	-19%	5%
10	60	-15%	23%
11	49	-4%	29%
12	69	5%	20%
13	79	14%	8%
14	78	10%	-8%
15	71	9%	-25%
16	76	-5%	-13%



Photometric Report

ERA 700 IP – Narrow

BEAM DETAILS

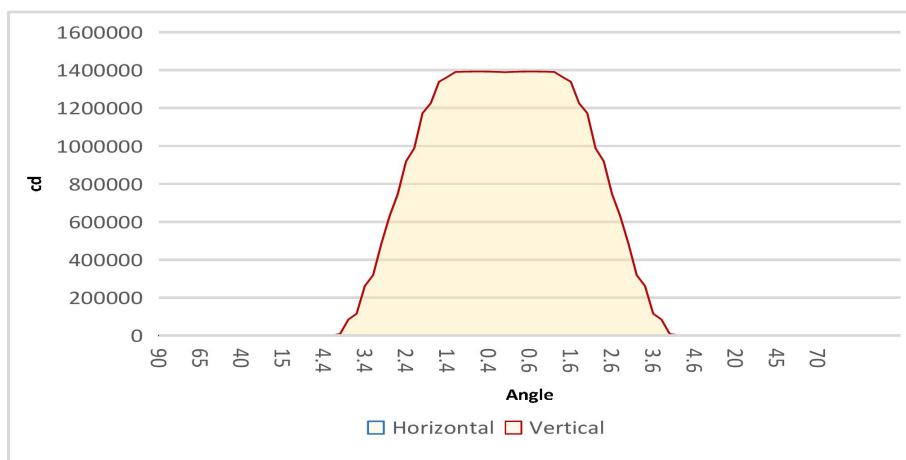


Beam width: = 0.1 * distance
Illuminance: = 1389502 / (distance²)

distance in [m] for illuminance in [lux] distance in [ft] for illuminance in [fc]

BEAM ILLUMINANCE FROM 1-20M

1m	2m	3m	4m	5m	6m	7m	8m	9m	10m	11m	12m	13m	14m	15m	16m	17m	18m	19m	20m
3.3ft	6.6ft	9.8ft	13.1ft	16.4ft	19.7ft	23ft	26.2ft	29.5ft	32.8ft	36.1ft	39.4ft	42.7ft	45.9ft	49.2ft	52.5ft	55.8ft	59.1ft	62.3ft	65.6ft
1389502lx	347375lx	154389lx	86844lx	55580lx	38597lx	28357lx	21711lx	17154lx	13895lx	11483lx	9649lx	8222lx	7089lx	6176lx	5428lx	4808lx	4289lx	3849lx	3474lx
129089fc	32272.2fc	14343.2fc	8068.1fc	5163.6fc	3585.8fc	2634.5fc	2017fc	1593.7fc	1290.9fc	1066.9fc	896.5fc	763.8fc	658.6fc	573.7fc	504.3fc	446.7fc	398.4fc	357.6fc	322.7fc



BEAM ANGLE 50%	FIELD ANGLE 10%	CUTOFF ANGLE 3%
5.4°	7.1°	7.9°